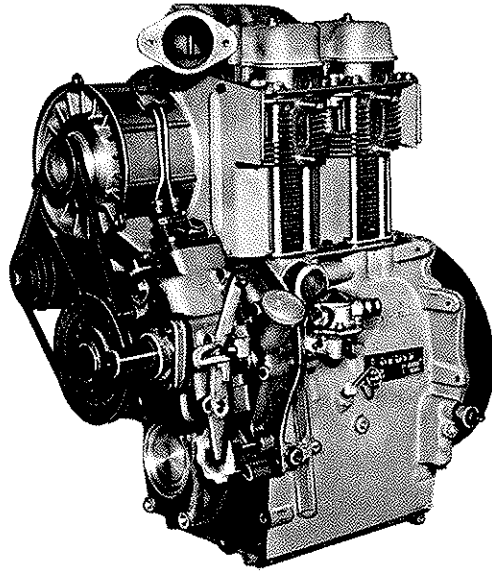


TP 20



ERSATZTEILLISTE

SPARE PARTS CATALOGUE · CATALOGUE DE PIÈCES DE RECHANGE · LISTINO PARTI DI RICAMBIO
LISTA DE REPUESTOS · CATALOGO DAS PEÇAS SOBRESSALENTES · RESERVDLSLISTA



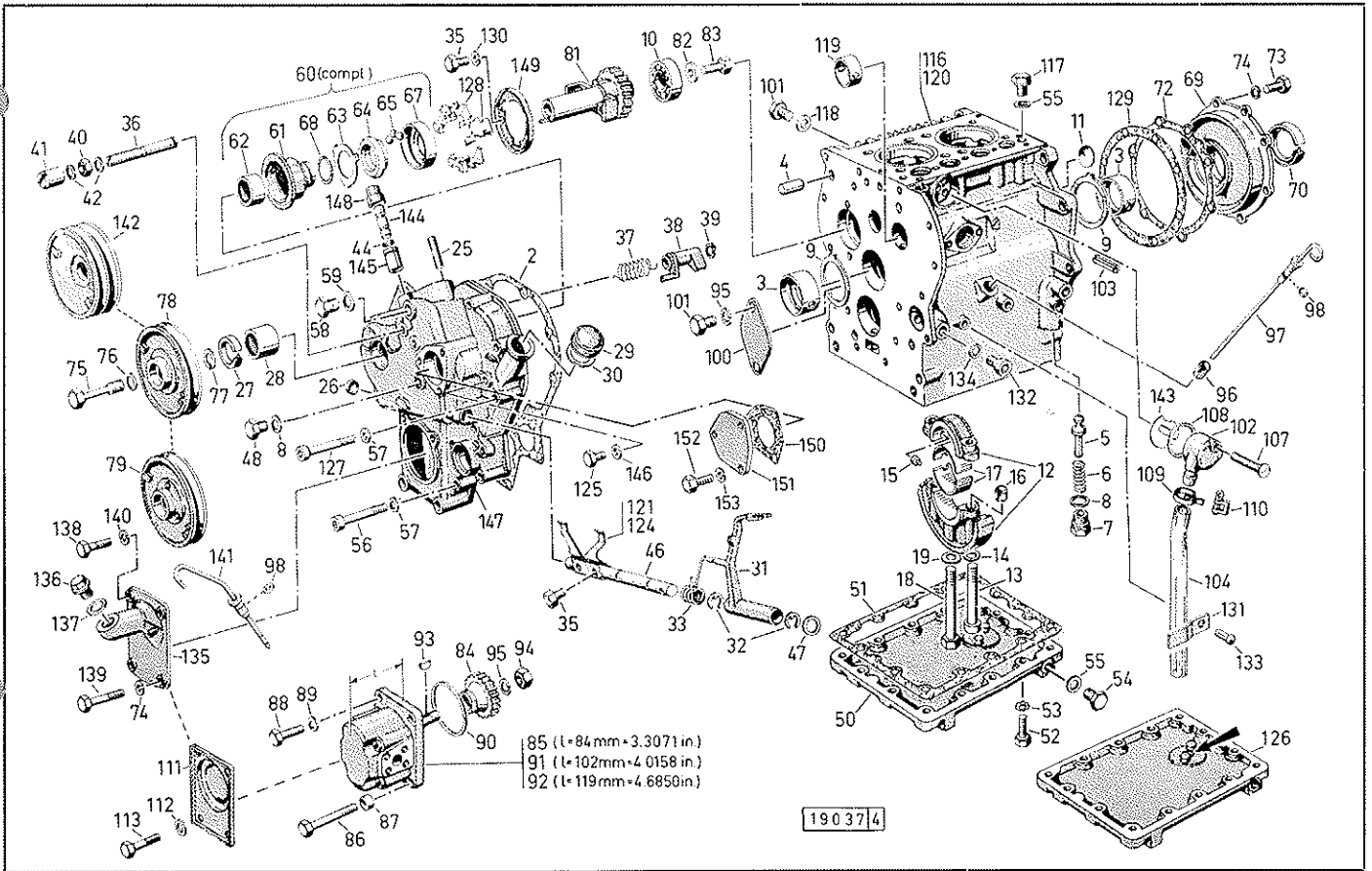
Z 0141-42

8. AUFLAGE

Kurbelgehäuse
Crankcase
Carter de manivelle
Incastellatura
Carter
Cárter
Vevhus

Tafel
Jilustration
Planche
Tavola
Grabado
Tábua
Plansch

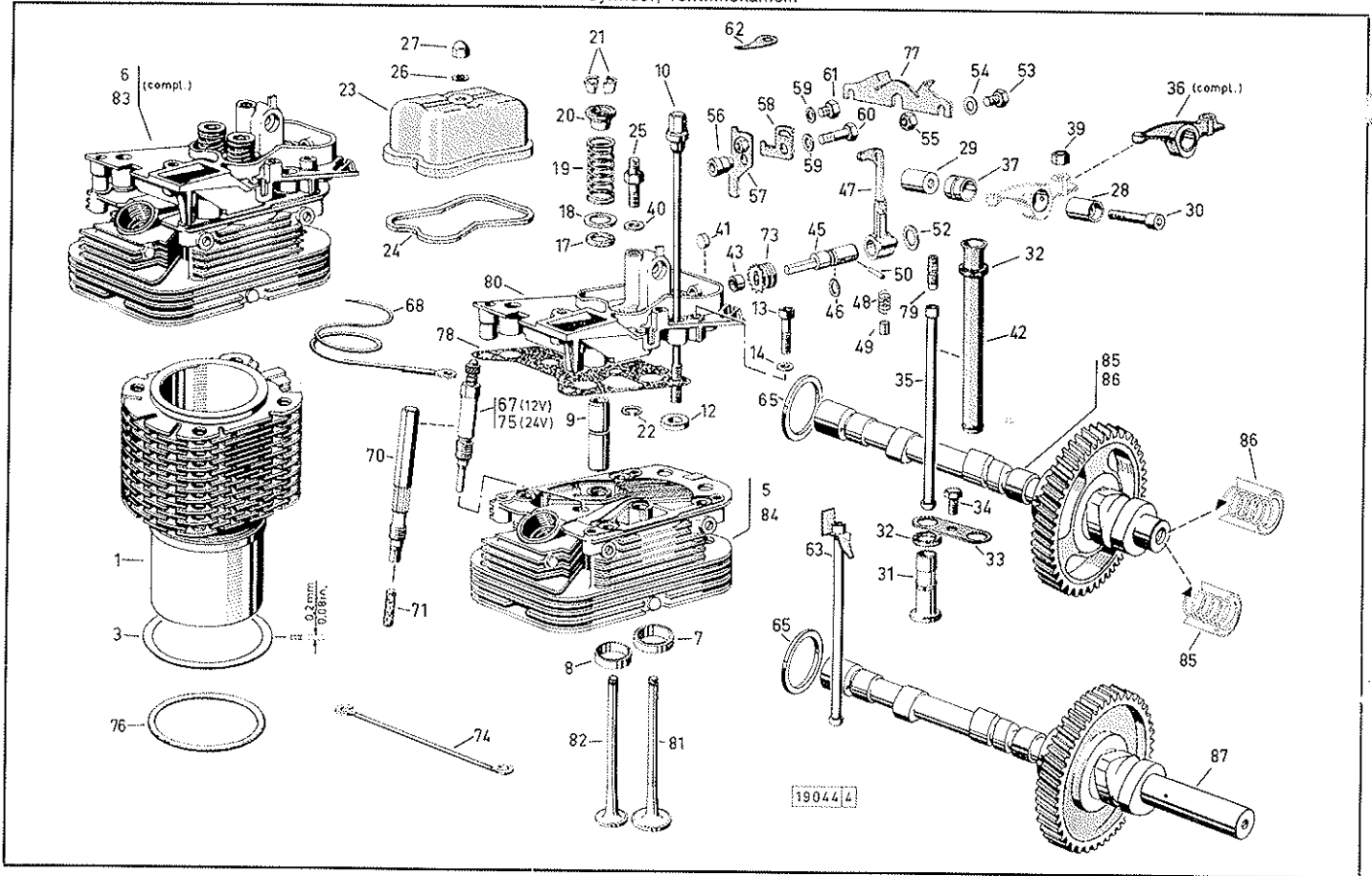
M1A



M1B

Tafel
 Illustration
 Planche
 Tavola
 Grabado
 Táboa
 Plansch

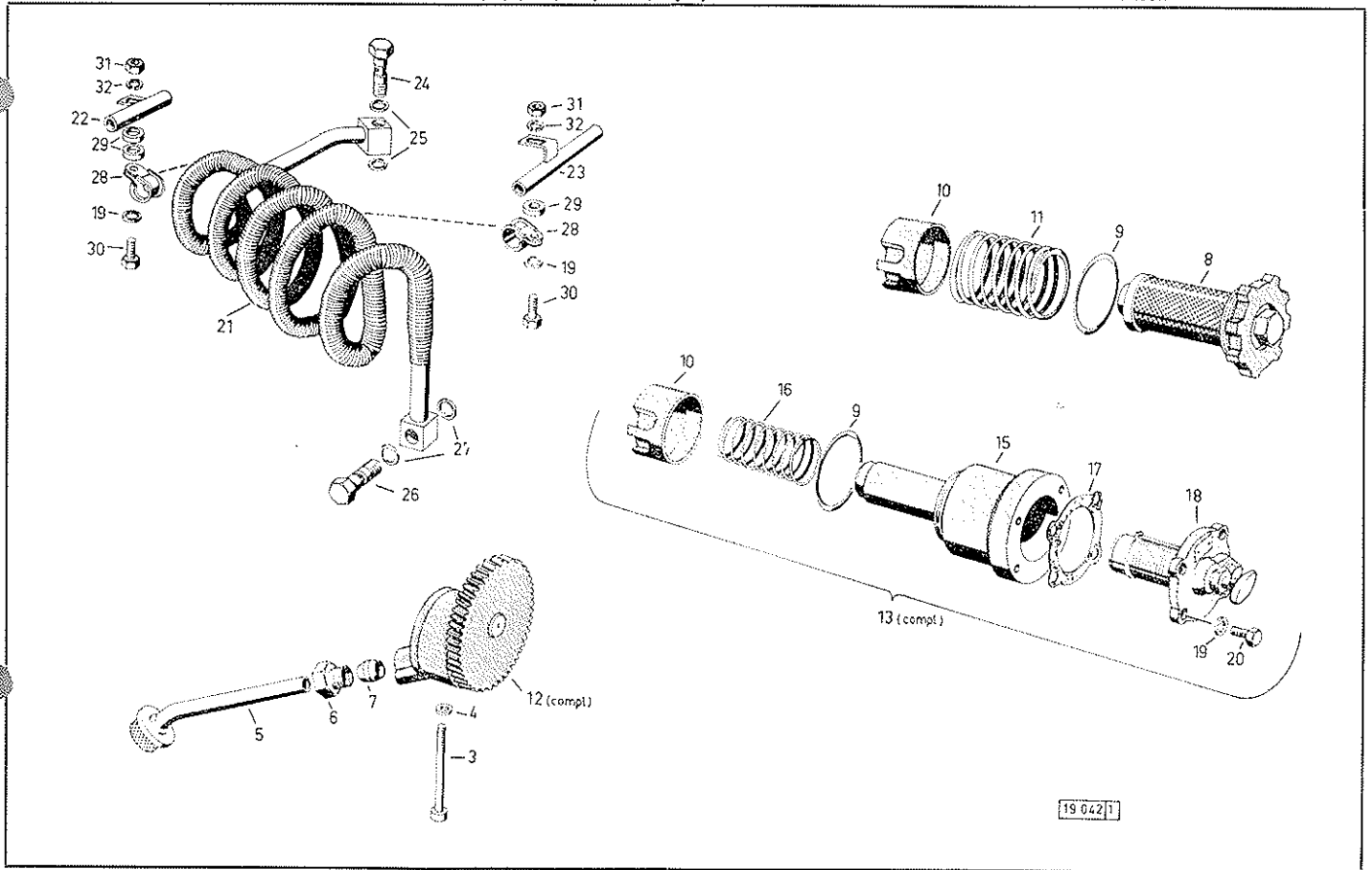
Zylinder, Steuerungsteile
 Cylinder, valve operating gear
 Cylindre, pièces de distribution
 Cilindro, organi di distribuzione
 Cilindro, piezas de la distribución
 Cilindros, órgãos de distribuição
 Cylinder, ventilmekanism



Schmierölpumpe, Ölfilter, Ölkühler
 Lube oil pump, oil filter, oil cooler
 Pompe à huile de graissage, filtre à huile, refroidisseur d'huile
 Pompa dell'olio - Filtro dell'olio - Refrigrante dell'olio
 Bomba de aceite lubricante, filtro de aceite, refrigerador de aceite
 Bomba de óleo lubrific, filtro de óleo, refrigerador de óleo
 Smörjöljepump, oljefilter, oljkytare

Tafel
 Illustration
 Planche
 Tavola
 Grabado
 Táboa
 Plansch

M1C

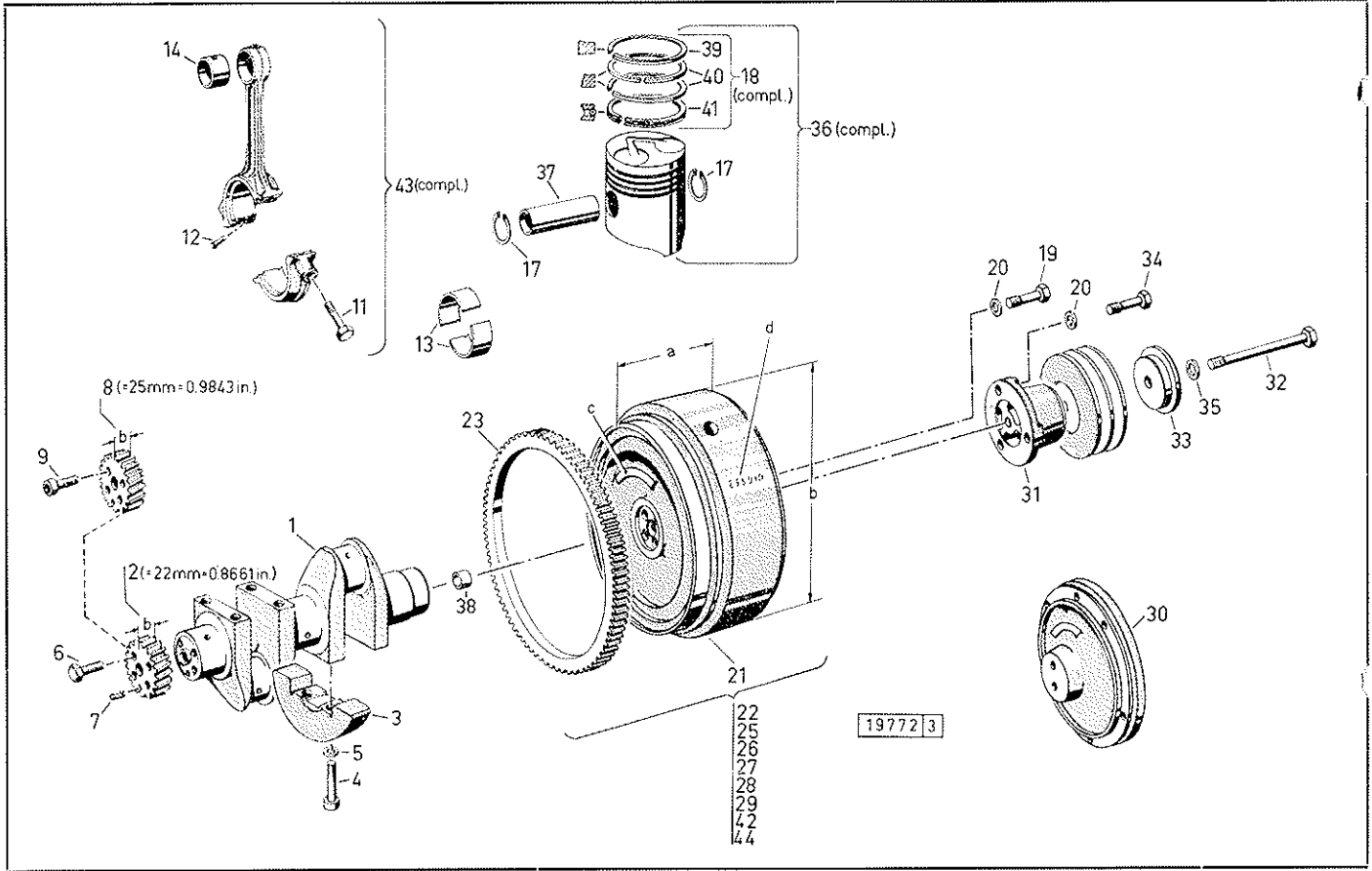


19 042 1

M 2 D

Tafel
 Illustration
 Planche
 Tavola
 Grabado
 Tábua
 Plansch

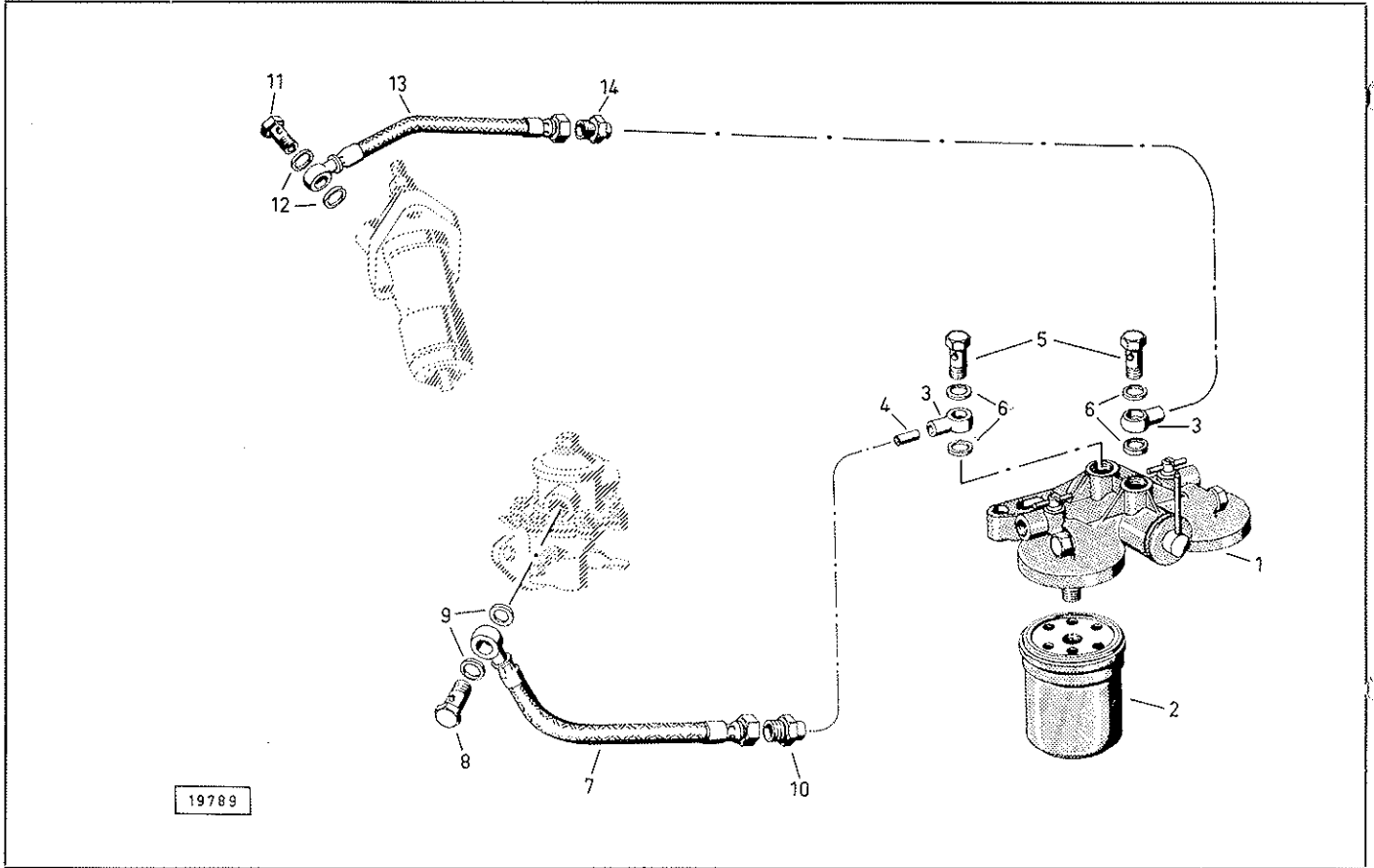
Triebwerkteile
 Motion parts
 Embiellage
 Organi di trasmissione
 Peças del mecanismo motriz
 Peças do mecanismo motriz
 Vevaxel, vevstakar, kolvar



M 2 E

Tafel
Illustration
Planche
Tavoia
Grabado
Tábua
Plansch

Kraftstoff-Doppelfilter
Fuel duplex filter
Filtre double à combustible
Filtro doppio a combustivel
Filtro gemelo
Filtro dupla
Bränsle-Dubbelfilter

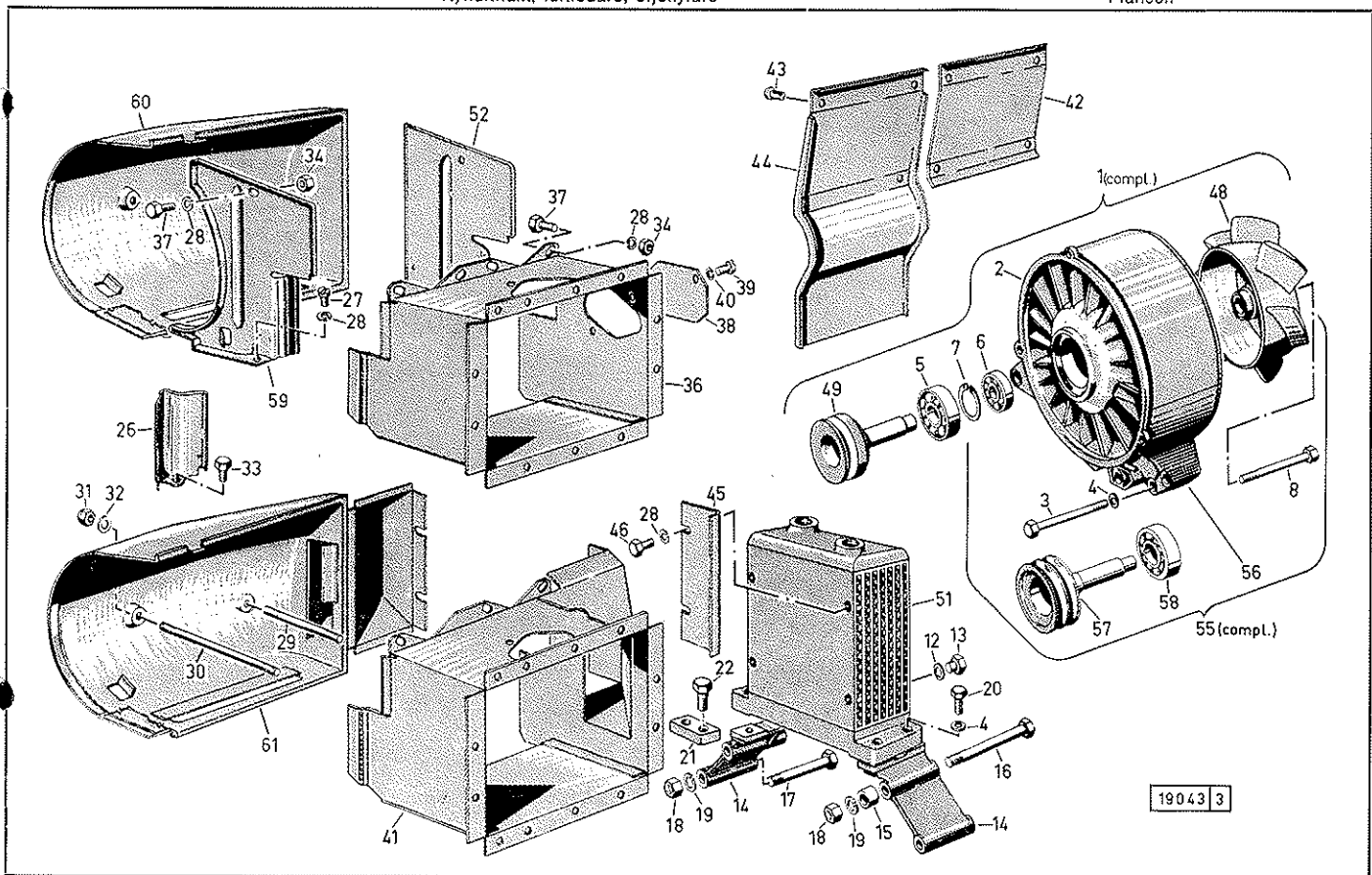


19789

Kühlluftgebläse, Luftführung, Ölkühler
 Cooling air blower, cowling, oil cooler
 Soufflante d'air de refroidissement, manche d'air, refroidisseur d'huile
 Soffiante e convogliatore dell'aria, refrigerante dell'olio
 Ventilador y conducción del aire, refrigerador de aceite
 Ventilador e condução do ar, refrigerador de óleo
 Kyliluftfläkt, luftledare, oljekylare

Tafel
 Jllustration
 Planche
 Tavola
 Grabado
 Tábua
 Plansch

M 1 F

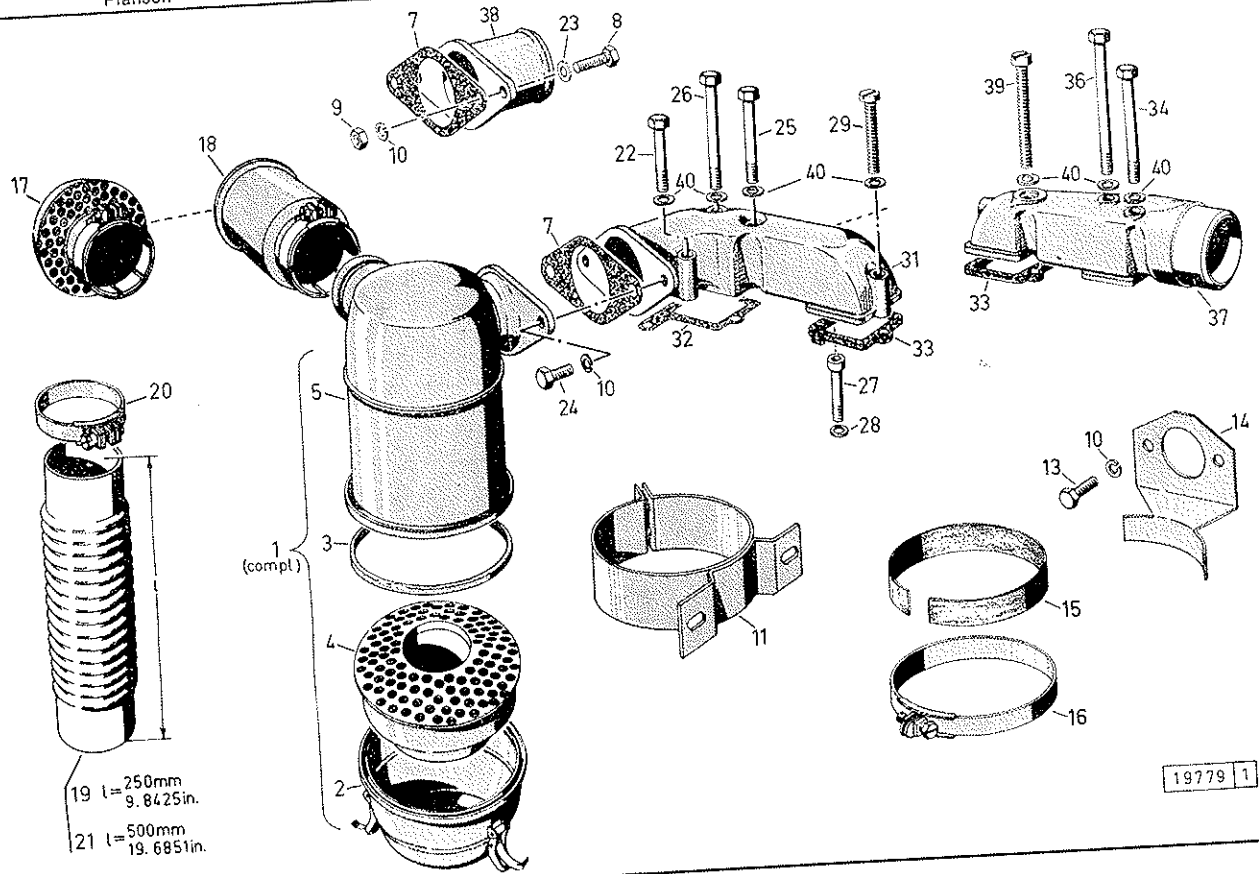


M 2 G

Tafel

Tafel
 Jllustration
 Planche
 Tavola
 Grabado
 Tábuá
 Plansch

Luftfilter, Saugrohr
 Air cleaner, intake pipes
 Filtre d'air, tuyaux d'admission
 Filtro dell'aria — Collettori di aspirazione
 Filtro de aire, tuberías de admisión
 Filtro de ar, tubagens de admissáo
 Luftrenare, insughingsrör



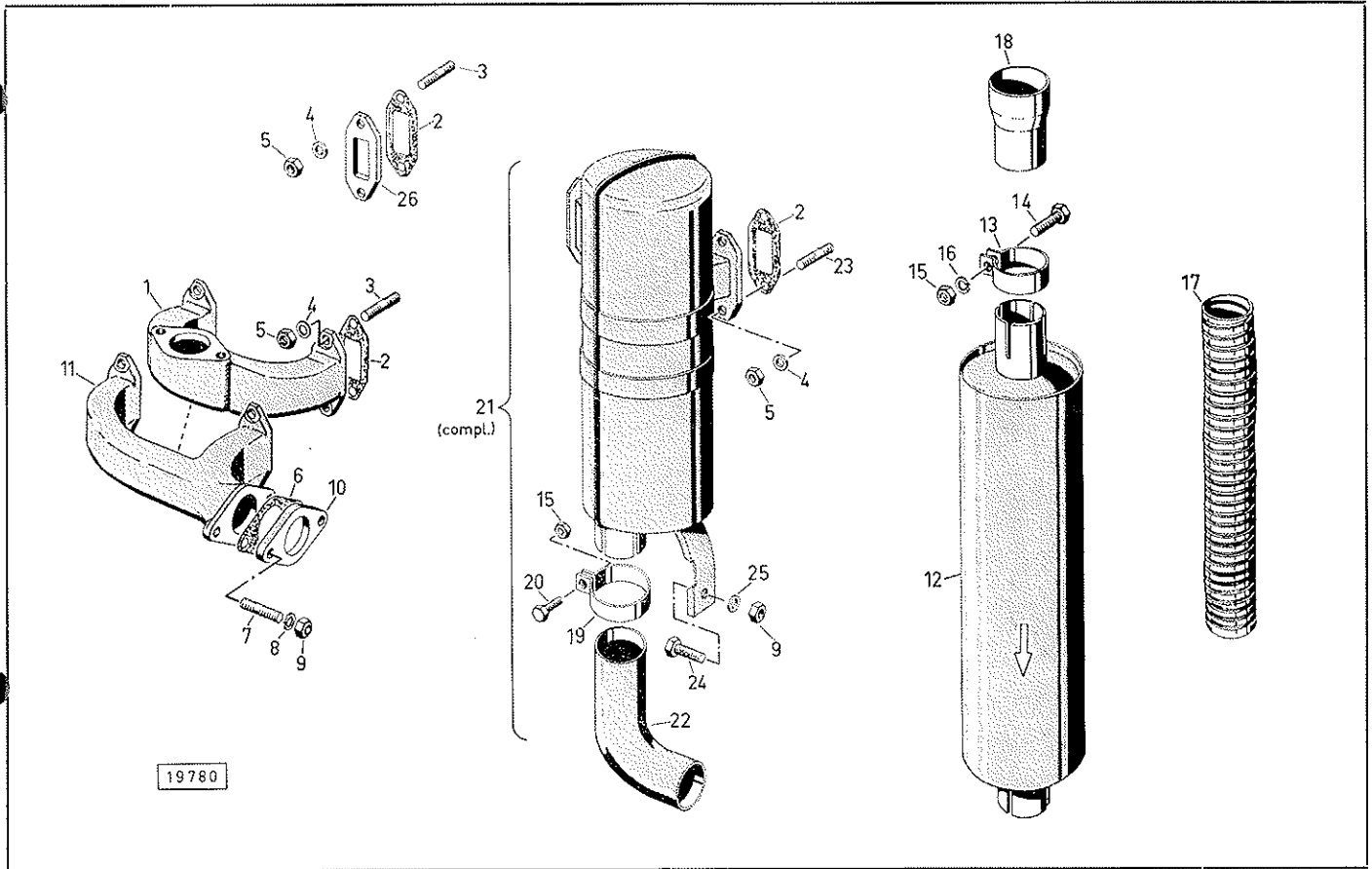
19 l = 250mm
 9.8425in.
 21 l = 500mm
 19.6851in.

19779 1

Auspufftopf, Auspuffrohr
 Exhaust silencer, exhaust pipe
 Pot d'échappement, tuyau d'échappement
 Marmitta di scarico — Tubo di scarico
 Silenciador, tubo de escape
 Silencioso, tubagem de escape
 Ljuddämpare, avgasrör

Tafel
 Jilustration
 Planche
 Tavola
 Grabado
 Tábua
 Plansch

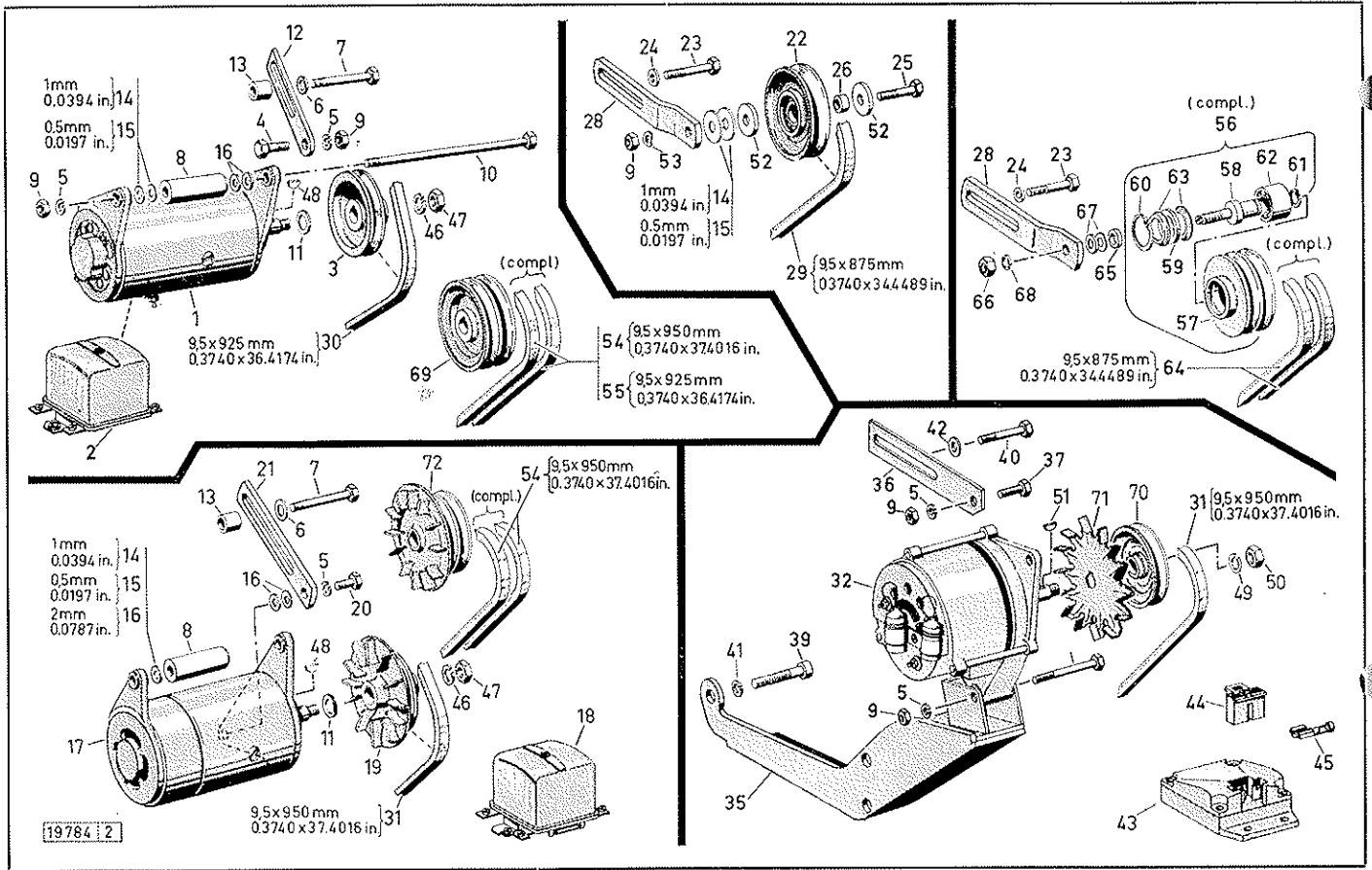
M 3 G



M 2 H

Tafel
 Illustration
 Planche
 Tavola
 Grabado
 Tábuas
 Plansch

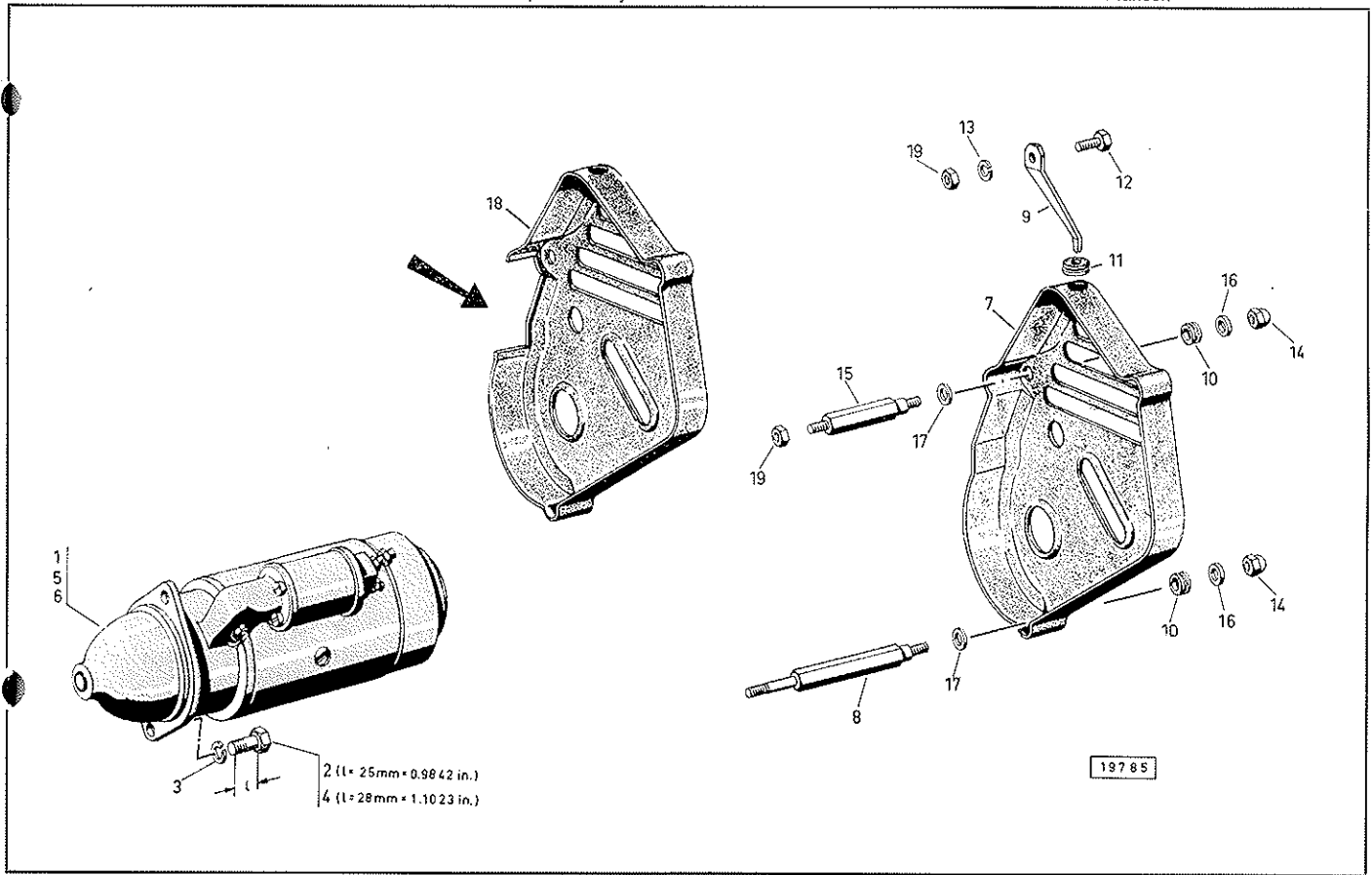
Lichtmaschine
 Dynamo
 Dynamo
 Dinamo
 Dinamo
 Dinamo
 Generator



Anlasser, Keilriemenschutz
 Starter, V-belt guard
 Démarreur, couvre-courroie
 Motorino d'avviamento, Protezione per cinghie trapezoidali
 Arrancador, protección de correa trapecial
 Arrancador, proteção da correa em V
 Startmotor, klremsskydd

Tafel
 Jllustration
 Planché
 Tavola
 Grabado
 Tábua
 Plansch

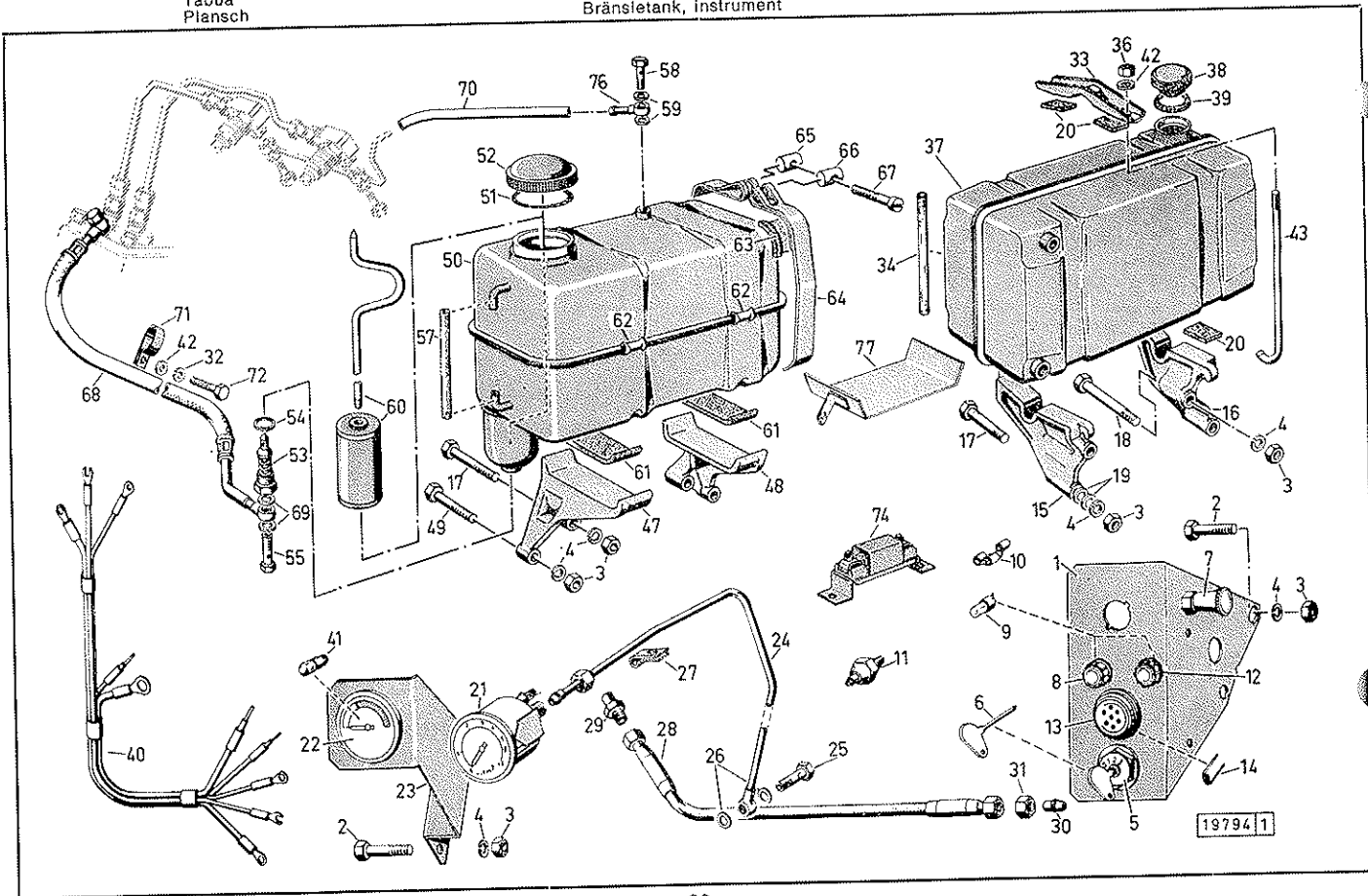
M 3 H



M1K

Tafel
Illustration
Planche
Tavola
Grabado
Tábua
Plansch

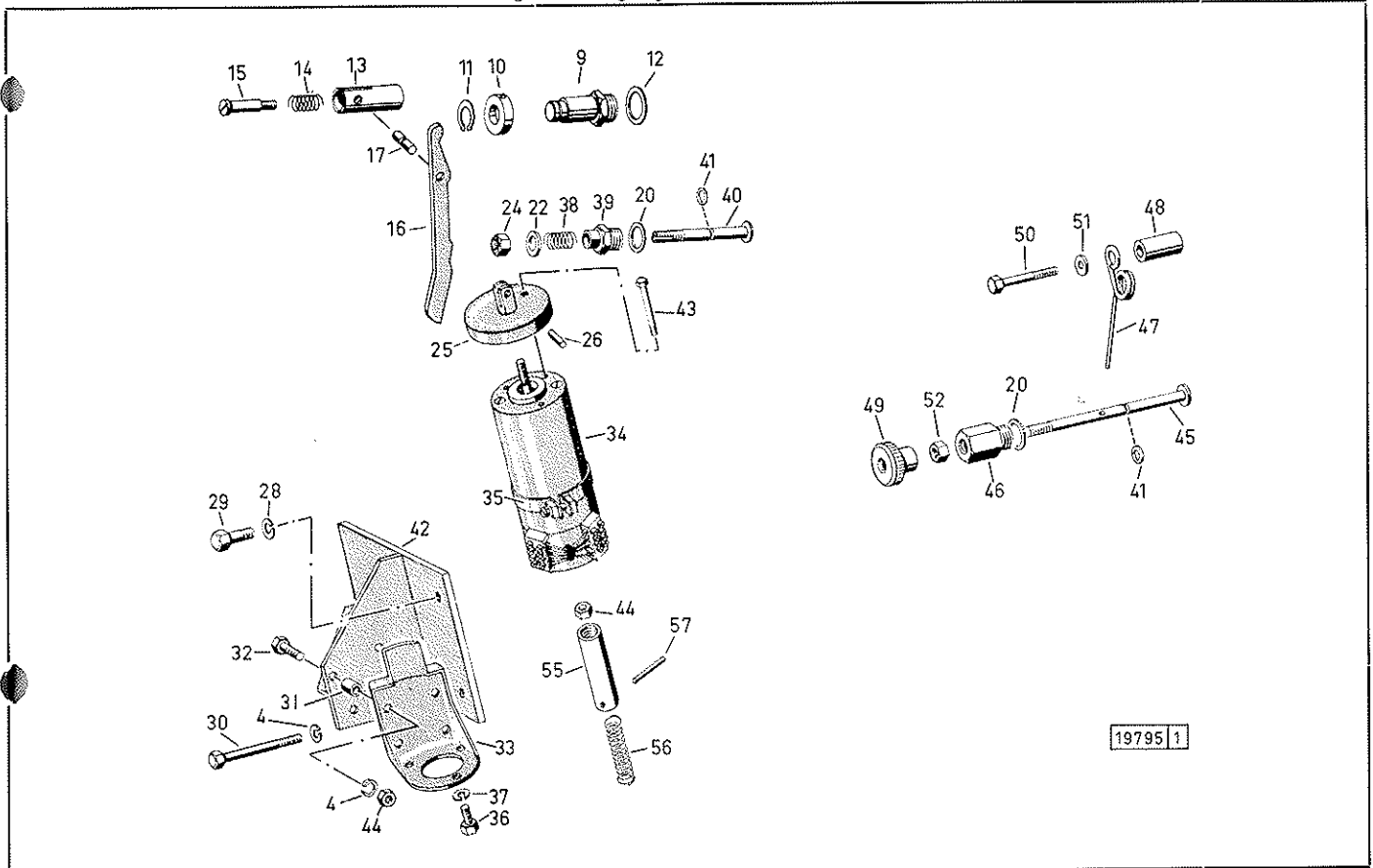
Kraftstoffbehälter, Meßgeräte
Fuel tank, measuring instruments
Réservoir à combustible, instruments de mesure
Serbatoio del combustibile, strumenti di controllo
Tanque de combustible, aparatos de medición
Reservatório de combustível, aparatos de medição
Bränsletank, instrument



Motorabstellung
 Shut down device
 Dispositif d'arrêt
 Arresto
 Dispositivo de parada
 Dispositivo de parada
 Anordning för fränslagning

Tafel
 Jilustration
 Planche
 Tavola
 Grabado
 Tábuá
 Plansch

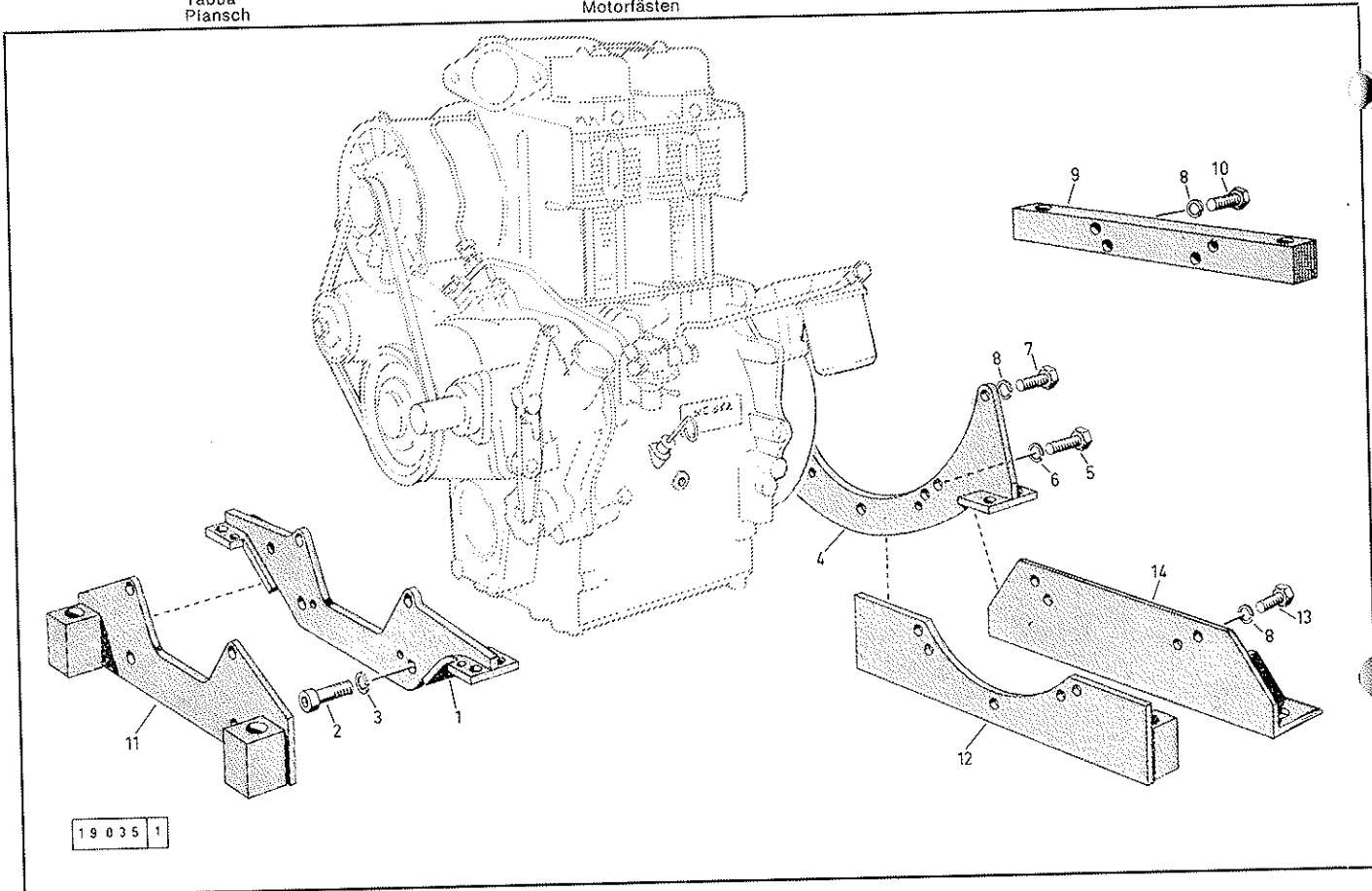
M 1 L



M 1 M

Tafel
Illustration
Planche
Tavola
Grabado
Tábua
Plansch

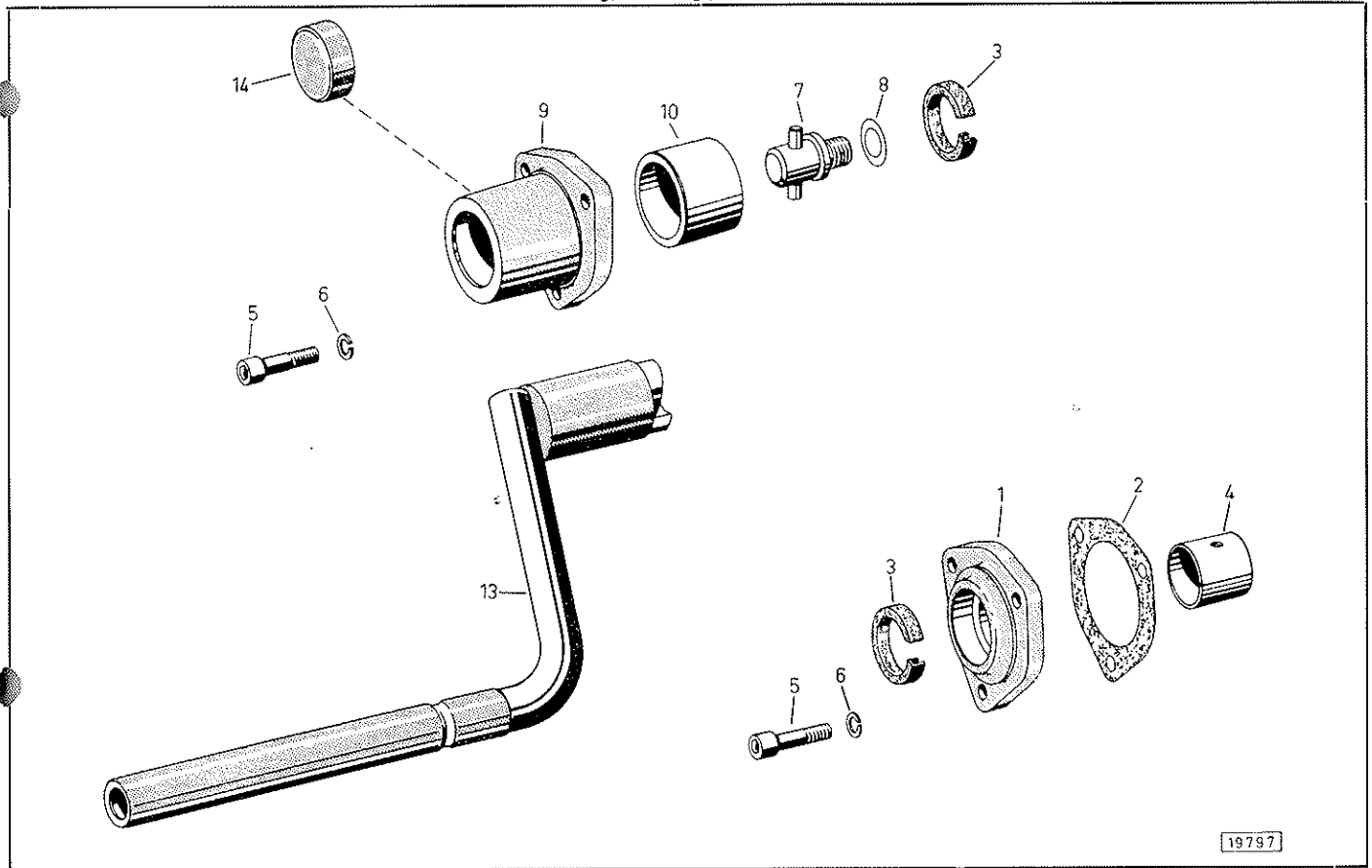
Motorbefestigung
Engine mounting parts
Fixation du moteur
Accessori per fissaggio motore
Fijación del motor
Fixação del motor
Motorfästen



Andrehvorrichtung, Kraftabnahme an Nockenwelle
Cranking device, power take-off on camshaft
Vireur, prise de force sur l'arbre à cames
Manovella per avviamento a mano, presa di forza sull'albero a camme
Dispositivo de arranque manual, toma de fuerza en el árbol de levas
Dispositivo de pôr em marcha, tomada de força no eixo de cames
Handstart-anordning, kraftuttag på kamaxeln

Tafel
Illustration
Planche
Tavola
Grabado
Tábua
Plansch

M 1 N

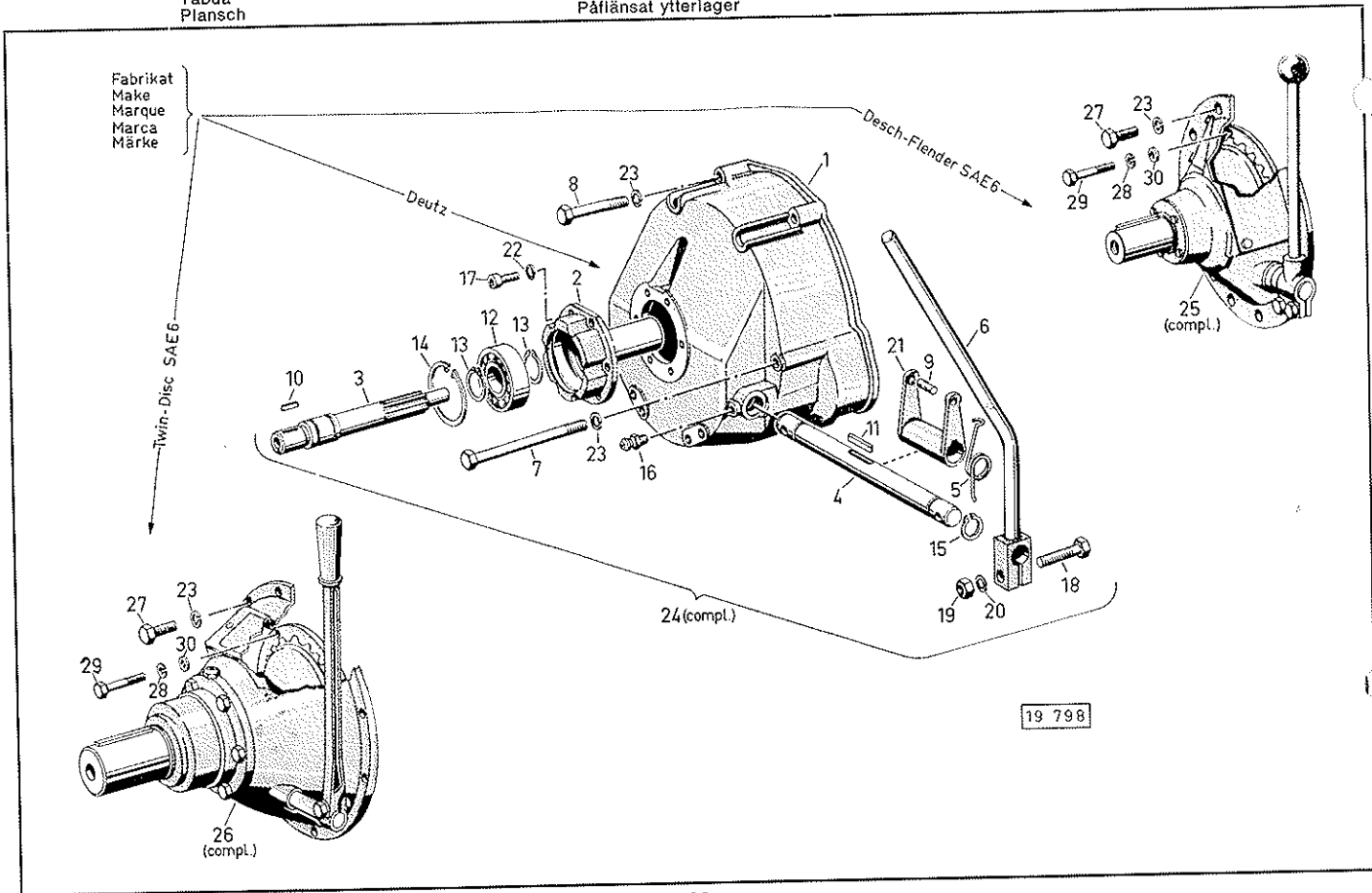


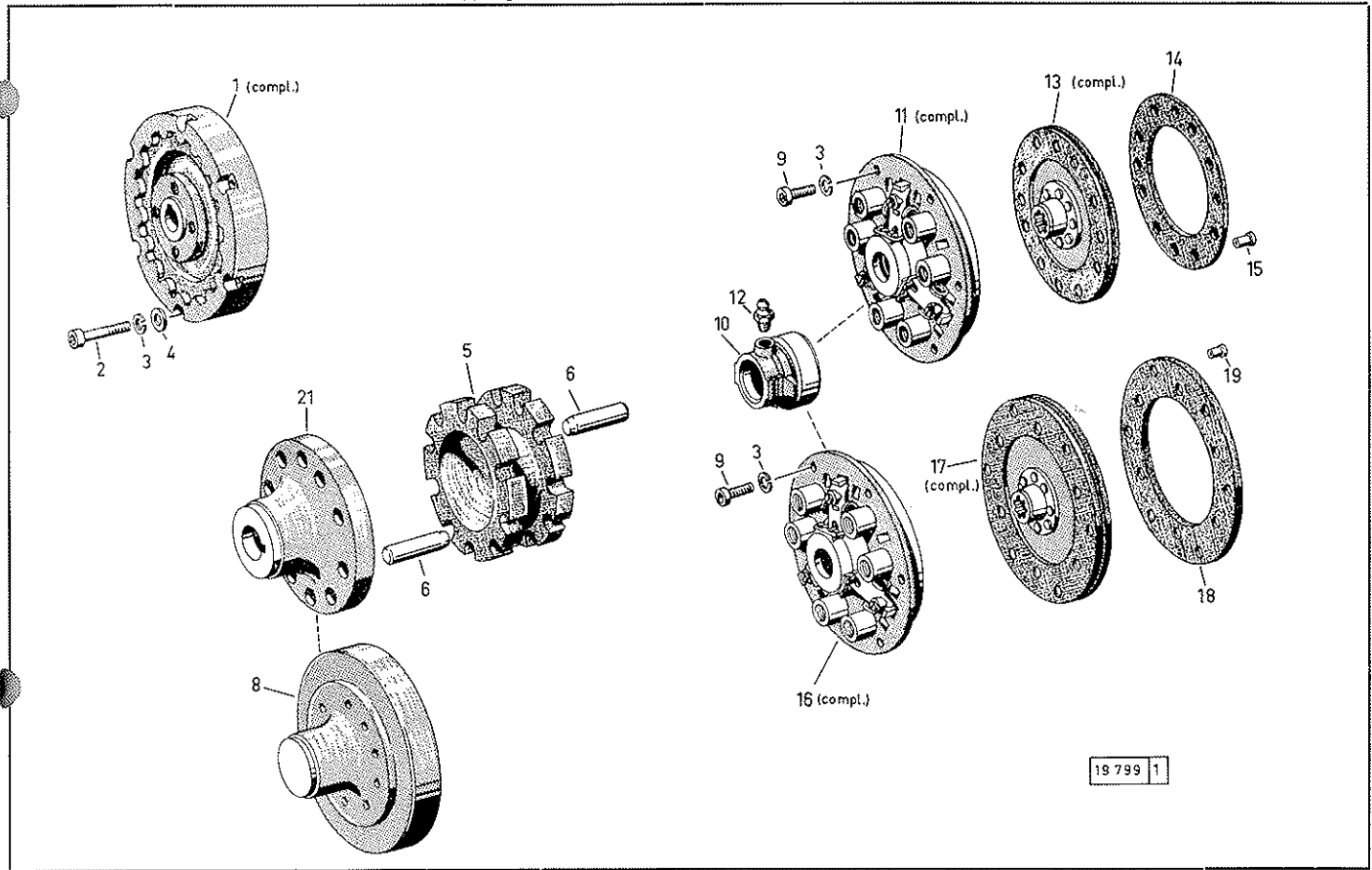
19797

M 2 P

Tafel
Illustration
Planche
Tavola
Grabado
Tábua
Plansch

Anflansch-Außenlager
Flange-type outer bearing
Palier extérieur à bride
Supporto esterno fiangiato
Soporte exterior de brida
Mancal exterior de flange
Påflänsat ytterlager





M1S

Tafel
Jilustration
Pianche
Tavola
Grabado
Tábua
Plansch

Anschlußgehäuse, Drehzahlstellvorrichtung
Adapter housing, speed control
Carter de raccordement, dispositif de changement de vitesse
Campana, dispositivo variazione numero di giri
Caja de conexión, sistema de aceleración
Caixa de conexão, sistema de aceleração
Mellanring, varvtalsreglage

